

CentralLineMan Trainer

VASCULAR ACCESS TRAINER



CentralLineMan is the medical education community's premier Central Venous Catheterization training solution. With both external and internal landmarks, users can practice CVC placement in three access sites: Subclavian, Supraclavicular and Internal Jugular. This trainer allows users to train using real-time ultrasound guidance during catheter placement, providing a very realistic image.

NOW WITH ARTICULATING HEAD

Add more realism to your training with an Articulating Head.

- Head can be rotated or tilted back
- Increased procedural difficulty
- Additional landmarks of the jaw and ear
- Increased realism with soft tissue head and eyes
- Easy to use, clean, and maintain

FEATURES AND BENEFITS:

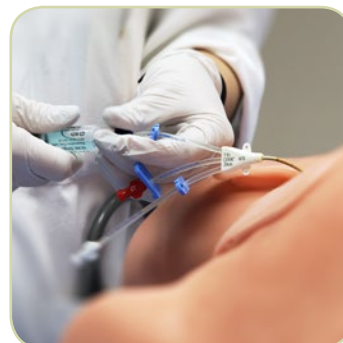
- › Offers lowest cost per student
- › Exceptional ultrasound imaging with all popularly used ultrasound systems
- › Complete all of the steps for the full procedure
- › Ultra-durable replaceable tissues withstand hundreds of needle sticks and dozens of full catheterizations
- › Anatomically correct human torso with landmarks
- › Both arterial and venous blood provide for instant results
- › Tissues are self-contained and come pre-filled with fluid
- › Arterial pulse and proper landmarks are present to help avoid and detect errors
- › Easily adjustable venous pressure to simulate complications



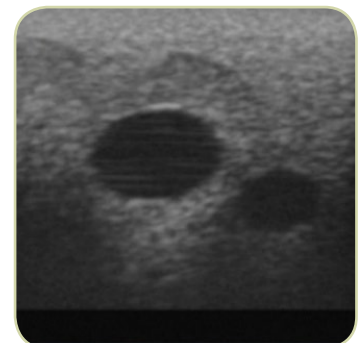
Ultrasound Guided with Appropriate Landmarks



Self-sealing, Durable Tissue for Many Uses



Full Central Venous Catheterization



Ultrasound Imaging

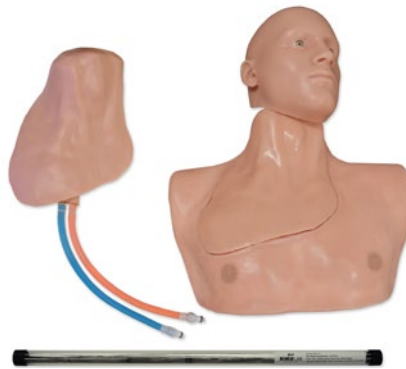
CENTRALINEMAN PRODUCT AND TRAINING PACKAGES



CENTRALINEMAN WITH ARTICULATING HEAD

- › CentralLineMan Body Form
- › Articulating Head
- › Replaceable Tissue
- › Simulated Arterial/Venous Blood
- › Fill Port with Funnel
- › Carrying Case
- › User's Guide

PART #: CLM-41



CENTRALINEMAN PACKAGE WITH ARTICULATING HEAD

Package includes:

- › CentralLineMan Trainer with Articulating Head
- › One extra replaceable tissue
- › 25 non-sterile guidewires.

PART #: CLTP-21



VASCULAR ACCESS PACKAGE WITH ARTICULATING HEAD

Package includes:

- › CentralLineMan Trainer
- › Articulating Head
- › FemoralLineMan Trainer
- › Extra replaceable tissue for each.

PART #: CVC-21



CENTRALINEMAN WITHOUT ARTICULATING HEAD

PART #: CLM-40



CENTRALINEMAN PACKAGE W/O ARTICULATING HEAD

PART #: CLTP-40



VASCULAR ACCESS PACKAGE W/O ARTICULATING HEAD

PART #: CVC-20



ARTICULATING HEAD FOR CENTRALINEMAN

Add more realism to your training with an Articulating Head.

- › Head can be rotated or tilted back
- › Increased procedural difficulty
- › Jaw and ear landmarks
- › Increased realism with soft tissue head and eyes
- › Easy to use, clean, and maintain

PART #: AH-10

FOR MORE INFORMATION:

Visit our web site to view videos of all of our products.


SIMULAB
CORPORATION

Seattle, WA 98119 USA
866-400-1260 • 206-297-1260
www.simulab.com